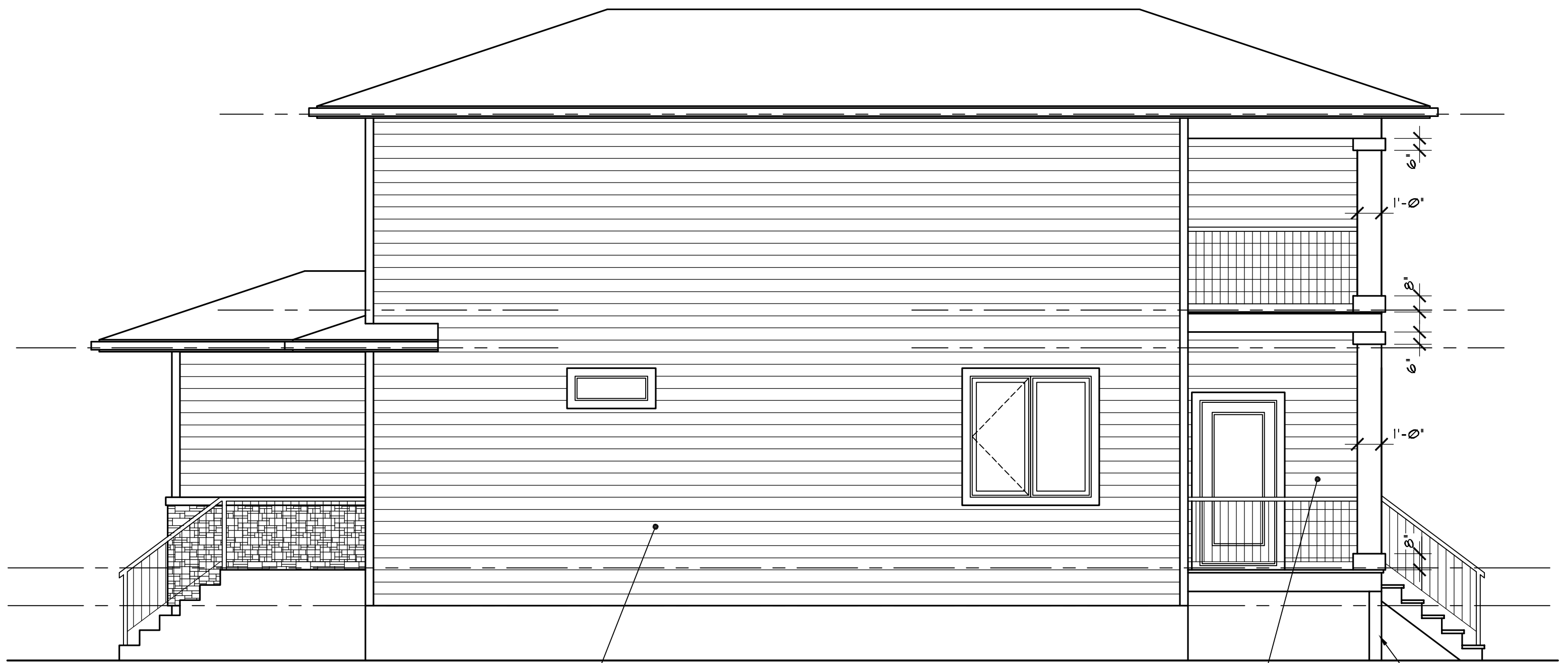


**WEST ELEVATION**  
SCALE: 1/4" = 1'-0"



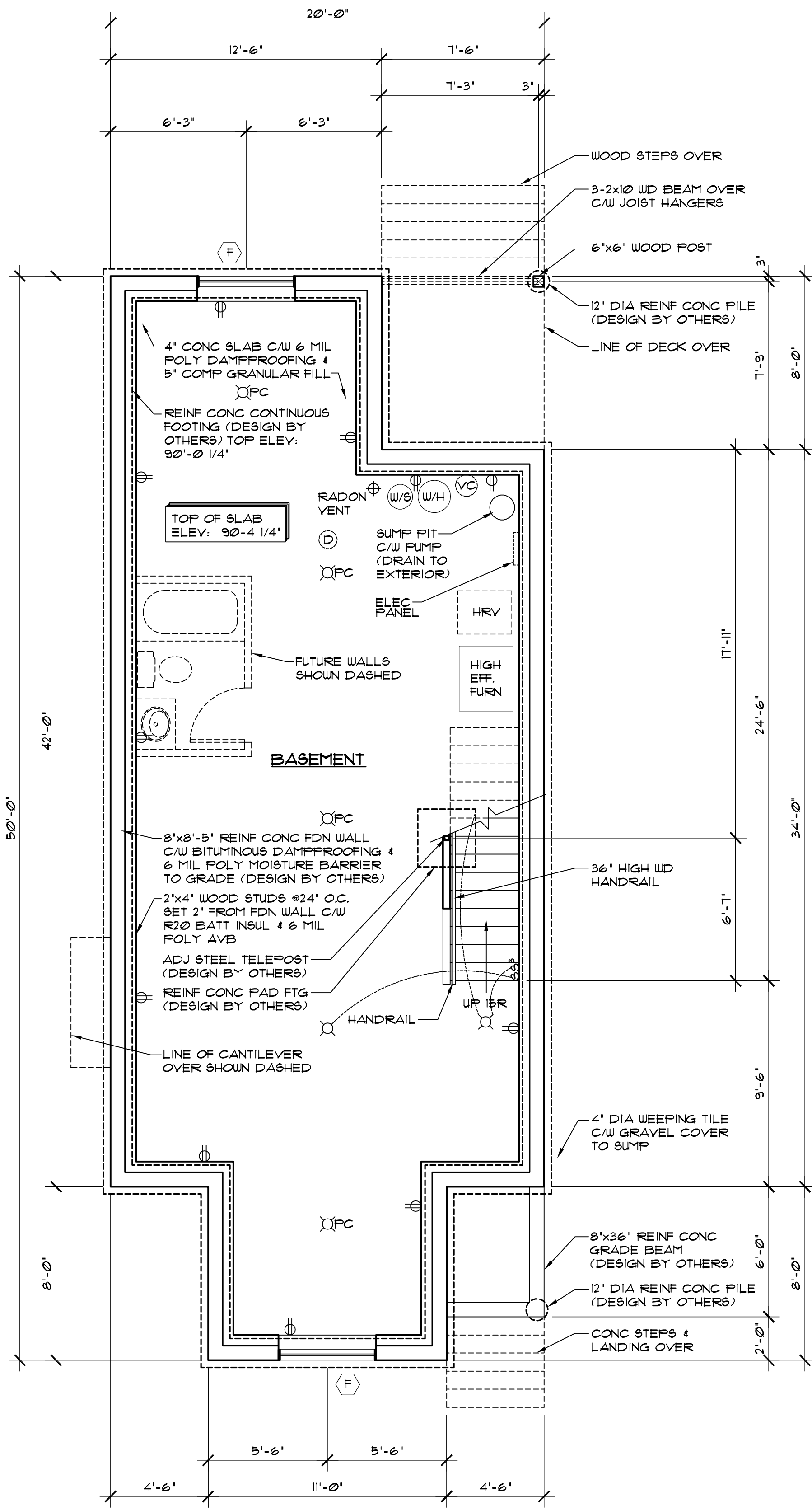
**SOUTH ELEVATION**  
SCALE: 1/4" = 1'-0"

**SOUTH ELEVATION GLAZED OPENING CALCS:**  
EXPOSING BUILDING FACE AREA = 768 SQ FT  
LIMITING DISTANCE = 1.204m  
MAX % OF GLAZED OPENINGS = 7% (NBC 9.10.15.4)  
GLAZED OPENING AREA (%) = 28 SQ FT (3.6%)

**SOUTH ELEVATION GLAZED OPENING CALCS:**  
EXPOSING BUILDING FACE AREA = 181 SQ FT  
LIMITING DISTANCE = 3.490m  
MAX % OF GLAZED OPENINGS = 32.12% (NBC 9.10.15.4)  
GLAZED OPENING AREA (%) = 22 SQ FT (11%)

<p><b>www.robinsonplans.com</b> A DIVISION OF ROBINSON RESIDENTIAL DESIGN INC.</p> <p>2232 2ND AVENUE REGINA, SASKATCHEWAN CANADA S4R 1K3 TOLL FREE: (877) 352-6617 FAX: (306) 352-6619</p>	<p>PROJECT <b>75 BRIGHAM ROAD</b> MOOSE JAW, SK</p>	<p>SCALE 1/4" = 1'-0"</p>	<p>DRWN BY E.M.</p>	<p>CHK'D BY T.D.</p>	<p>DRAWING TITLE <b>EXTERIOR ELEVATIONS</b></p>	<p>DRAWING NO. <b>A-1</b></p>
		<p>DATE JUNE 19, 2019</p>	<p>BASE PLAN # THE SCARTH</p>			

DISCLAIMER: 1. Copyright of these plans remains with Robinson Residential Design Inc. and issuance of them are for one time build only. Duplication of these plans in whole or in part and multiple builds from these plans are strictly prohibited, without prior written permission from Robinson Residential Design Inc. 2. Drawings are not to be scaled. 3. All plans are drawn to suit the Canadian National Building Code and International Residential Code. Due to local building codes, zoning regulations and climatic conditions, plans must be reviewed by local building official prior to construction. All structural components indicated on these drawings must be reviewed and engineered by a licensed architect or engineer. 4. Robinson Residential Design Inc. assumes no liability or responsibility for any errors, omissions and any incidental indirect or consequential damages whatsoever arising from the use of these drawings or the information provided therein.



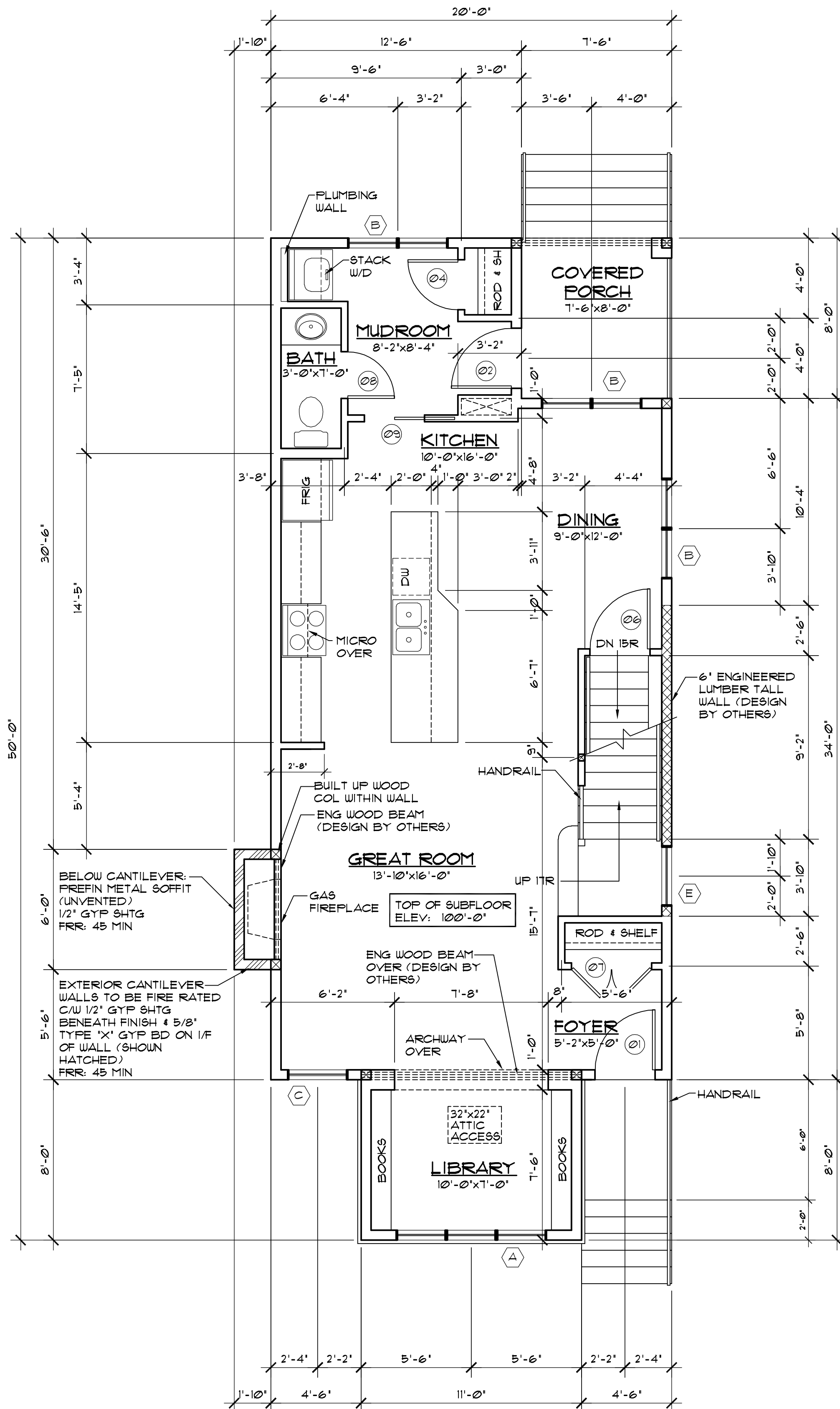
**BASEMENT NOTES:**

1. DIMENSIONS ARE TAKEN TO EXTERIOR FACE AND INTERIOR FACE OF FDN WALLS AND TO CENTERLINE OF INT PARTITIONS U.N.O. DIMENSIONS WILL GO TO FACE OF FRAMING WHERE THERE ARE FLOOR CHANGES, AND AT TUB/SHOWER UNITS.
2. ALL BASEMENT WALLS SHOULD BE BUILT WITH FLOAT SPACE TO PERMIT UPWARD MOVEMENT OF BASEMENT FLOOR SLAB.
3. ELECTRICAL/MECHANICAL EQUIPMENT LOCATIONS SUBJECT TO CHANGE AT CONTRACTORS DISCRETION.
4. INSTALL RADON ROUGH-IN PIPE WITH RADON C/W SEALED CAP FOR FUTURE RADON DEPRESSURIZATION SYSTEM. SEE PLAN FOR VENT LOCATION. RUN OTHER END UNDER SLAB TO CENTRE OF BUILDING FOOTPRINT.

**BASEMENT PLAN**  
 SCALE: 1/4" = 1'-0"  
 AREA: 868 SQ FT

<a href="http://www.robinsonplans.com">www.robinsonplans.com</a> A DIVISION OF ROBINSON RESIDENTIAL DESIGN INC.		2232 2ND AVENUE REGINA, SASKATCHEWAN CANADA S4R 1K3 TOLL FREE: (877) 352-6617 FAX: (306) 352-6619	PROJECT <b>75 BRIGHAM ROAD</b> MOOSE JAW, SK	SCALE 1/4" = 1'-0" DATE JUNE 19, 2019	DRWN BY EM. CHK'D BY T.D. BASE PLAN # THE SCARTH	DRAWING TITLE <b>BASEMENT PLAN</b>	DRAWING NO. <b>A-3</b>
--	--	---	--	--	---	---------------------------------------	---------------------------

DISCLAIMER: 1. Copyright of these plans remains with Robinson Residential Design Inc. and issuance of them are for one time build only. Duplication of these plans in whole or in part and multiple builds from these plans are strictly prohibited, without prior written permission from Robinson Residential Design Inc. 2. Drawings are not to be scaled. 3. All plans are drawn to suit the Canadian National Building Code and International Residential Code. Due to local building codes, zoning regulations and climatic conditions, plans must be reviewed by local building official prior to construction. All structural components indicated on these drawings must be reviewed and engineered by a licensed architect or engineer. 4. Robinson Residential Design Inc. assumes no liability or responsibility for any errors, omissions and any incidental indirect or consequential damages whatsoever arising from the use of these drawings or the information provided therein.



**MAIN FLOOR PLAN**  
 SCALE: 1/4" = 1'-0"  
 AREA: 868 SQ FT

**MAIN FLOOR NOTES:**

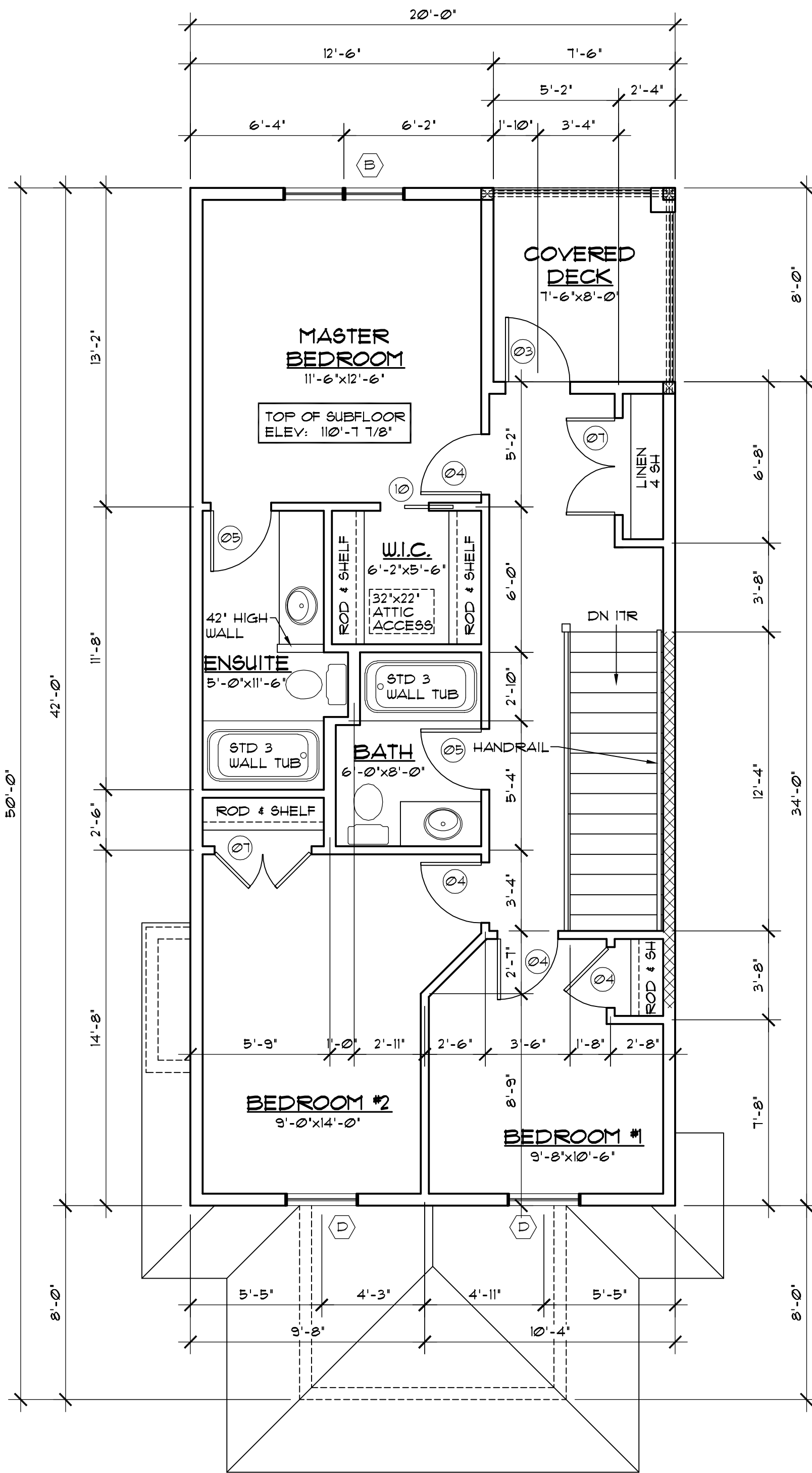
1. DIMENSIONS ARE TAKEN TO EXTERIOR FACE OF WALL SHEATHING FOR EXTERIOR WALLS AND TO CENTERLINE OF INT PARTITIONS UNO. DIMENSIONS WILL GO TO FACE OF FRAMING WHERE THERE ARE FLOOR OR CEILING FRAMING CHANGES, AND AT TUB/SHOWER UNITS.
2. CONFIRM ALL COLUMN LOCATIONS WITH SUPPORTED STRUCTURAL MEMBERS & COLUMNS BELOW.
3. REFER TO ASSEMBLY LEGEND FOR FULL WALL, FLOOR, & ROOF ASSEMBLY CALLUPS.
4. COORDINATE EXACT WINDOW AND EXTERIOR DOOR LOCATIONS. MAINTAIN SPACING BETWEEN WINDOWS, DOORS AND CORNERS TO ALLOW FOR EXTERIOR AND INTERIOR TRIMS.
5. SEE ELEVATIONS FOR WINDOW DIRECTION OF OPERATION, DIMENSION OF ANY UN-EVEN SPLITS, OBSCURE GLASS, ETC.
6. INSTALL SOLID BLOCKING IN FLOOR SPACE UNDER COLUMNS AS REQUIRED.
7. INSTALL BLOCKING UNDER INTERIOR WALLS PARALLEL TO FLOOR TRUSSES AS REQUIRED.
8. FLOOR TRUSS SUPPLIER TO DESIGN TRUSSES TO SUIT MECHANICAL.

**LINTEL NOTES:**

1. ALL LINTELS OVER WINDOWS AND DOORS TO BE DESIGNED BY OTHERS UNO.

<a href="http://www.robinsonplans.com">www.robinsonplans.com</a> A DIVISION OF ROBINSON RESIDENTIAL DESIGN INC.	2232 2ND AVENUE REGINA, SASKATCHEWAN CANADA S4R 1K3 TOLL FREE: (877) 352-6617 FAX: (306) 352-6619	PROJECT	SCALE	DRWN BY	CHK'D BY	DRAWING TITLE	DRAWING NO.
		<b>75 BRIGHAM ROAD</b> MOOSE JAW, SK	1/4" = 1'-0" DATE JUNE 19, 2019	EM. BASE PLAN # THE SCARTH	T.D.	<b>MAIN FLOOR PLAN</b>	<b>A-4</b>

DISCLAIMER: 1. Copyright of these plans remains with Robinson Residential Design Inc. and issuance of them are for one time build only. Duplication of these plans in whole or in part and multiple builds from these plans are strictly prohibited, without prior written permission from Robinson Residential Design Inc. 2. Drawings are not to be scaled. 3. All plans are drawn to suit the Canadian National Building Code and International Residential Code. Due to local building codes, zoning regulations and climatic conditions, plans must be reviewed by local building official prior to construction. All structural components indicated on these drawings must be reviewed and engineered by a licensed architect or engineer. 4. Robinson Residential Design Inc. assumes no liability or responsibility for any errors, omissions and any incidental indirect or consequential damages whatsoever arising from the use of these drawings or the information provided therein.



**SECOND FLOOR PLAN**

SCALE: 1/4" = 1'-0"

AREA: 780 SQ FT

www.robinsonplans.com  
A DIVISION OF ROBINSON RESIDENTIAL DESIGN INC.

2232 2ND AVENUE  
REGINA, SASKATCHEWAN  
CANADA S4R 1K3  
TOLL FREE: (877) 352-6617  
FAX: (306) 352-6619

PROJECT

**75 BRIGHAM ROAD**

MOOSE JAW, SK

SCALE

1/4" = 1'-0"

DATE

JUNE 19, 2019

DRWN BY

EM.

CHK'D BY

T.D.

DRAWING TITLE

**SECOND FLOOR PLAN**

DRAWING NO.

**A-5**

1. Copyright of these plans remains with Robinson Residential Design Inc. and issuance of them are for one time build only. Duplication of these plans in whole or in part and multiple builds from these plans are strictly prohibited, without prior written permission from Robinson Residential Design Inc.  
2. Drawings are not to be scaled.  
3. All plans are drawn to suit the Canadian National Building Code and International Residential Code. Due to local building codes, zoning regulations and climatic conditions, plans must be reviewed by local building official prior to construction. All structural components indicated on these drawings must be reviewed and engineered by a licensed architect or engineer.  
4. Robinson Residential Design Inc. assumes no liability or responsibility for any errors, omissions and any incidental indirect or consequential damages whatsoever arising from the use of these drawings or the information provided therein.